

# TS-SERIES

2-Axis Slant Bed Lathe for Job Shops, Tool Rooms, and Production

Featuring Semi-Automatic + Conversational Programming + Standard G-Code



## TS Series Machine Features

The TS series slant bed type lathes are designed for speed, precision, and production. It is built on a single-base 30-degree inclined frame with the X and Z axes traveling on linear guides driven by precision ball screws. The base model spindle unit is belt driven with external encoder. A direct-drive built-in spindle upgrade enables simultaneous C-axis for mill-turn applications. The standard 12-Tool servo turret has a bolt-on type interface, while upgrade options for VDI or BMT turrets can be equipped with live tooling. The hydraulic system enables turret locking, chuck clamping, and tailstock quill advance. A conveyor system allows for easy chip removal and clean-up. The TS series offers a good balance of speed and accuracy, suitable for turning, grooving, facing, drilling, threading, tapping, and cylindrical or face turning of precision parts.



### Machine Features

- Automatic Servo Driven 12-Tool Turret
- Auto Lubrication System
- Auto Chip Conveyor System
- Hydraulic Chuck and Tailstock Quill
- Center Hole Drilling and Rigid Tapping

### Optional Features

- Direct Drive Spindle with C-Axis Control for Mill-Turn
- VDI or BMT Turret with Live Tools
- Tool Setting Probe
- Parts Catcher
- Bar Feeder
- Oil Mist Collector

# DynaPath WinDelta® Lathe CNC System



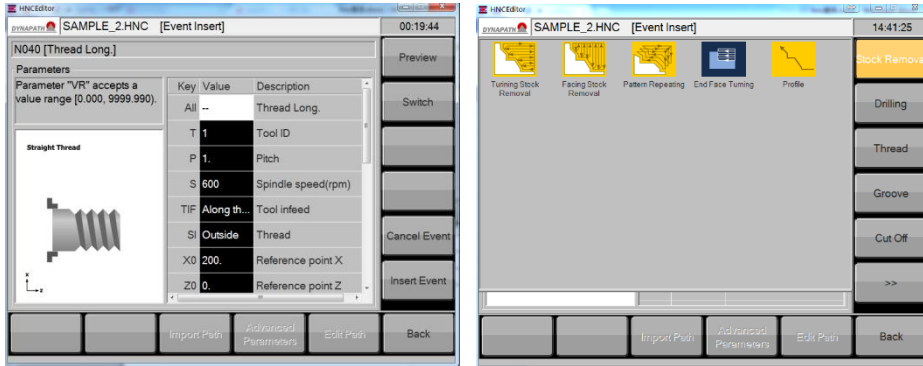
- DynaPath WinDelta® Lathe CNC System
- 15.6" Touchscreen LCD
- 16 GB SSD Storage
- 2x USB / 2x LAN
- DRO+ Handwheel Mode
- Conversational + DXF Import + Standard G-Code Programming
- Teach/Learn Functions
- Macros & Canned Cycles
- Networked File Management
- Remote Support and Diagnostics

## WinDelta® Control Features

<b>Operation</b>	<ul style="list-style-type: none"> <li>• Mode Switch, Mode Select, Touchscreen, Mouse, Keyboard</li> </ul>	<b>Motion</b>	<ul style="list-style-type: none"> <li>• Backlash, pitch error compensation</li> <li>• Tool X, Z, and wear compensation</li> <li>• Canned cycle and macro support</li> <li>• Drill, Bore, and Rigid Tapping</li> <li>• Constant Surface Speed</li> <li>• Polar and Cylindrical Interpolation</li> </ul>
<b>MANUAL Mode</b>	<ul style="list-style-type: none"> <li>• JOG, INCREMENTAL JOG, MPG functions</li> </ul>	<b>System Functions</b>	<ul style="list-style-type: none"> <li>• Remote Support and Diagnostics</li> <li>• Alarm and Event History database</li> </ul>
<b>DRO+ Mode</b>	<ul style="list-style-type: none"> <li>• Individual axis or simultaneous movement</li> <li>• Line, Arc, Thread Feed</li> <li>• Constant surface speed</li> </ul>	<b>Tuning</b>	<ul style="list-style-type: none"> <li>• Online servo tuning for resonance, vibration, torque filter, velocity loop, position loop, and feed-forward</li> </ul>
<b>EDIT Mode</b>	<ul style="list-style-type: none"> <li>• Save to, Load from USB</li> <li>• Built-in FTP server for remote part program management</li> <li>• Conversational Programming</li> <li>• DXF Import</li> </ul>		
<b>AUTO Mode</b>	<ul style="list-style-type: none"> <li>• MDI, Memory functions</li> <li>• Feed, Spindle, Rapid overrides</li> <li>• MPG Run, Retrace at any line</li> <li>• ISO G/M/S/T-Code support</li> <li>• Background edit</li> </ul>		
<b>Tool and Fixture Offsets</b>	<ul style="list-style-type: none"> <li>• 6 Work Offsets</li> <li>• 100 Tool Offsets</li> <li>• External Offset</li> <li>• Smart Align Functions</li> </ul>		

# DynaPath WinDelta® Programming

## Conversational Programming + DXF Import + G-Code Editing

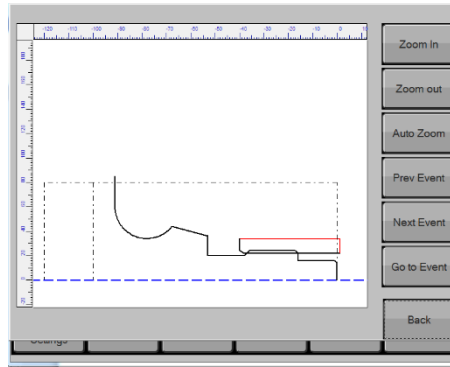
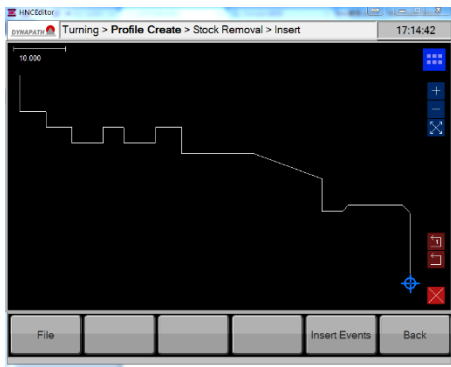
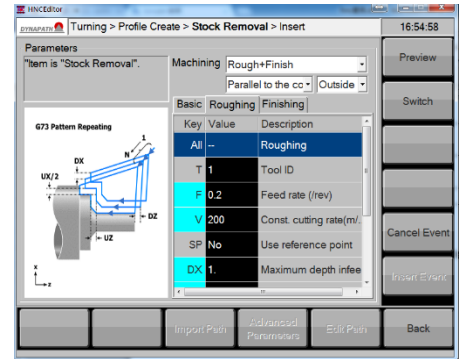
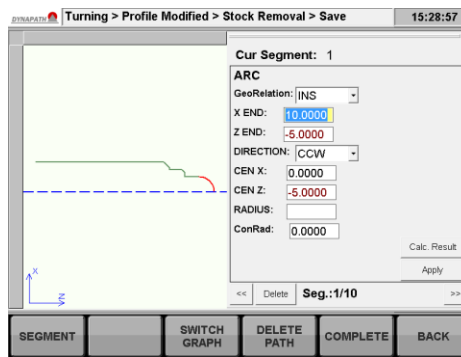


**Conversational Event Based Programming** allows creation of part programs by choosing from machining events and configuring parameters, without having to write G-Code.

**Built-in Events** include standard contouring, grooving, threading, cutoff, drilling, boring, tapping, and auxiliary events.

**Smart Profile Editor** allows quick and easy path creation and assists with geometric calculations.

**Conversational Graphics** convey detailed information about event parameters using graphical illustrations to assist with data entry.

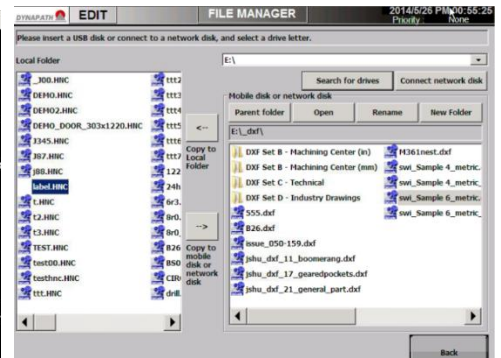
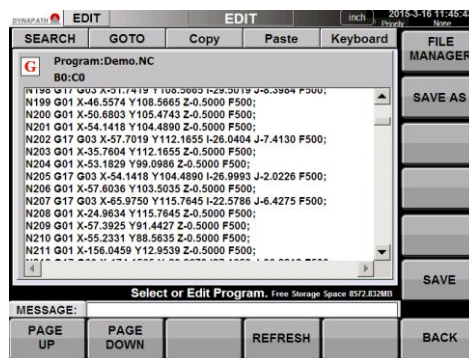


**DXF Drawing Import** allows the opening of DXF CAD drawings for geometry to be imported out via an intuitive, touch based interface, saving programming time and reducing errors.

**Preview Simulation** allows visual inspection of generated tool paths and final dimensions.

**G-Code Editor** enables direct ISO/EIA G-Code editing for users to write standard G-Code or fine tune CAD/CAM part programs.


**File Manager and Server** allows USB file transfer and Networked FTP file management of part programs and drawings.



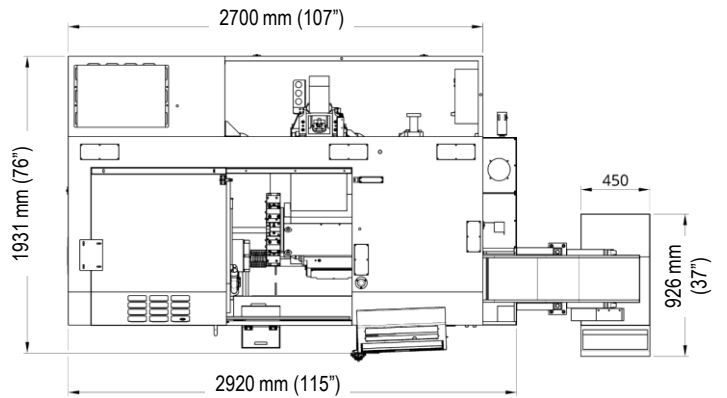
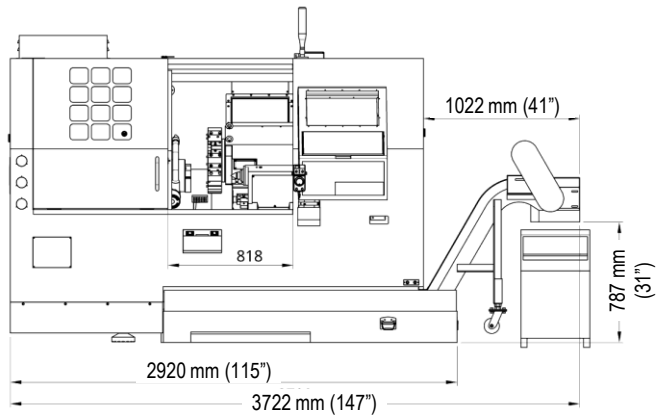
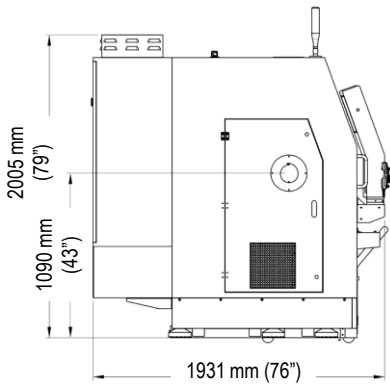
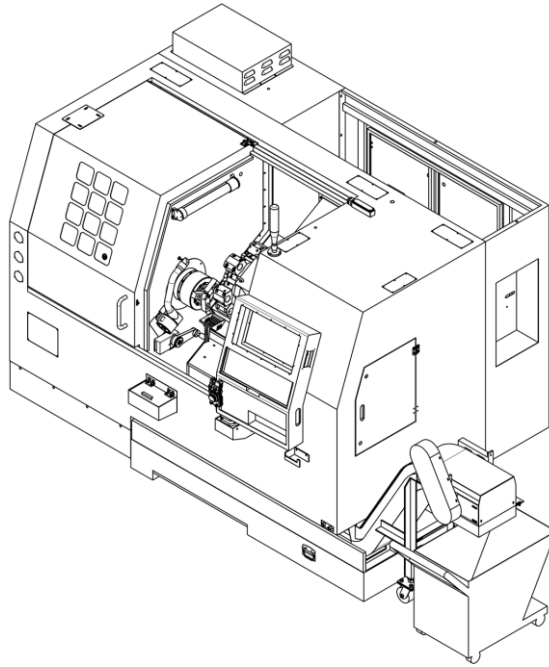


# TS SERIES MACHINE SPECIFICATIONS

MODEL	SPEC	TS-5052	TS-5052CS
WORK ENVELOPE	SWING OVER BED	Φ560 mm (22")	
	DISTANCE BETWEEN CENTERS	520 mm (25.5")	
	MAX TURNING DIAMETER	Φ500 mm (19.69")	
	MAX BAR DIAMETER	Φ52 mm (2.05")	
SPINDLE	SPINDLE BORE	Φ66 mm (2.6") A2-6	
	SPINDLE SPEED	4000 RPM	
	MOTOR RATING	10 kW (13.5 HP) S1 Rated 15kW (20 HP) S3 Rated	22kW (30HP) S1 Rated Synchronous Motor
CHUCK	TYPE / CENTER HOLE	Hydraulic 8" / Φ210 mm	
TRAVEL AND FEED RATES	X/Z TRAVEL	450 mm / 510 mm (17.7" / 20")	
	X/Z RAPID SPEEDS	18 m/min (709 IPM)	
	X/Z MOTOR RATING	9 N-m / 12 N-m (6.64 / 8.85 ft-lb)	
TOOL CHANGER	TYPE	12-Tool Bolt On Type (25x25mm)	12-Tool Turret BMT-55 (25x25mm) 2.2kW Live Tool Spindle
	TOOL SPEC: TURNING / BORING	25 x 25 mm / Φ40 mm (0.98" x 0.98" / 1.57")	
	DRIVE METHOD	Servo Driven with Hydraulic Lock	
TAILSTOCK	QUILL DIA / TRAVEL / TAPER	Φ80 mm (3.15") / 80 mm (3.15") / MT5	
	DRIVE METHOD	Manual + Hydraulic Quill + Servo Driven Option	
PRECISION	REPEAT ACCURACY XZ	0.003 mm (0.00012")	
	POSITIONING ACCURACY XZ	0.006 mm (0.00024")	
	TURNING UNIFORMITY DEV / DIA	0.006 mm / 100 mm (0.000236" / 3.94")	
SIZE	FLOOR SPACE	2920 x 1931 x 2005 mm (115" x 77" x 79") 3722 x 1931 x 2460 mm (147" x 77" x 97") *Conveyor + Oil Mist Collector	
	WEIGHT	4800 kg (10,560 lbs)	
INPUTS	ELECTRICAL	3-Phase, 220V, Max 50A, 40 KVA	
	COOLANT	120 L Coolant Capacity	

CONTROL SPECIFICATIONS	MACHINE FEATURES	ADDITIONAL OPTIONS
<ul style="list-style-type: none"> <li>• 12.1"/15.6" Touchscreen LCD Display</li> <li>• 16 GB Program Storage</li> <li>• 2 USB, 1 LAN</li> <li>• EtherCAT Digital Link Interface</li> <li>• MPG Handwheel Operation</li> <li>• ISO G-Code Motion Interpreter Core</li> <li>• Shop Floor Conversational Programming</li> <li>• DXF Drawing Import via Touch</li> <li>• File Send / Receive thru LAN / USB</li> <li>• FTP Networked File Management</li> <li>• Remote Diagnosis &amp; Support</li> <li>• Remote Monitoring and Reporting</li> <li>• Program Retrace, MPG Run</li> <li>• Real Time Tool Path Graphics</li> </ul>	<ul style="list-style-type: none"> <li>• Handheld MPG Handwheel</li> <li>• Automatic 12-Tool Servo Turret</li> <li>• Auto Lubrication System</li> <li>• Hydraulic 8" Chuck</li> <li>• Hydraulic Tailstock Quill</li> <li>• Hydraulic Foot Pedal Station</li> <li>• Work Light</li> <li>• Tri-Color Light Post</li> <li>• Flood Coolant System</li> <li>• Full Enclosure</li> <li>• Servo Driven Turret</li> </ul>	<ul style="list-style-type: none"> <li>• Direct Drive Spindle with C-Axis Control for Mill-Turn</li> <li>• BMT-55 Turret with Live Tools</li> <li>• Tool Setting Probe</li> <li>• Parts Catcher</li> <li>• Bar Feeder</li> <li>• Oil Mist Collector</li> <li>• Servo Driven Tailstock</li> <li>• Safety Interlocks</li> <li>• Bar Feeder</li> <li>• A2-8 Spindle</li> </ul>
		

# TS-5052 Dimensions





EZLearn

---

## ASIA PACIFIC

EZLearn Machinery Ltd.

WEBSITE: <http://EZLearnCNC.com>

TEL: +886-3-553-2880

FAX: +886-3-553-2883

E-MAIL: [sales@ezlearncnc.com.tw](mailto:sales@ezlearncnc.com.tw)

ADDRESS: No. 166-5, Sec. 1, Huanbei Rd.  
Zhubei City, Hsinchu County 302, Taiwan

## NORTH AMERICA

DynaPath Systems Inc.

WEBSITE: <http://DynaPath.com>

TEL: +1 248-488-0440

FAX: +1 248-488-0430

E-MAIL: [sales@dynapath.com](mailto:sales@dynapath.com)

ADDRESS: 34155 Industrial Rd.  
Livonia, MI 48150, USA

